

Oxford GI Resin CEM UF

Introducing Oxford GI Resin CEM UF Light Cure Resin Modified Glass Ionomer Cement for Luting



Good Esthetics, High Wear Resistance, Natural Adhesion and Remineralisation!

The **Oxford Resin Modified Glass Ionomer Cements** offer in comparison to conventional glass ionomer cements: **higher strength** in early phase of setting, higher **long term wear resistance** and **longer working time** combined with a **rapid light cure command set**. Furthermore they are **easier and faster to use** than composites and provide fluoride release.

The **Oxford GI Resin CEM UF** is a newly developed glass ionomer cement that shows, **high translucency, an important feature for anterior cementations**.

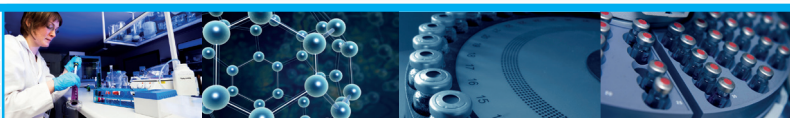
Features and Benefits

Features

- Good translucency
High colour stability
- Thanks to resin component,
 - Higher early strength
 - Higher flexibility
 - No solubility
- Resin component
- Additional light cure command set
- Fluoride release

Benefits

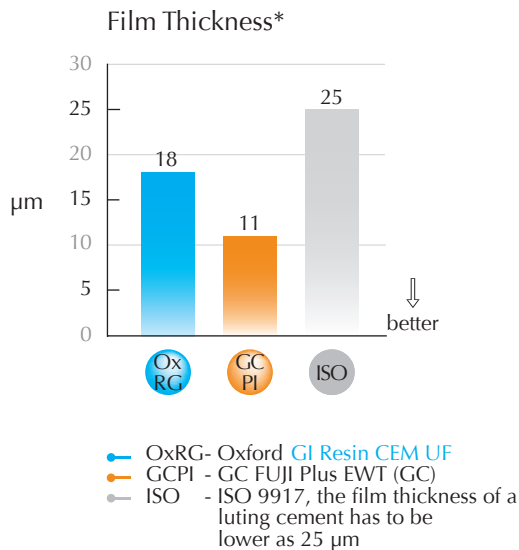
- Good esthetics for anterior cementations
- Long term wear resistance
- Higher mechanical resistance
- Easily bonded to resins
(for the sandwich technique)
- Long working time combined with a rapid command set
- Carries protection



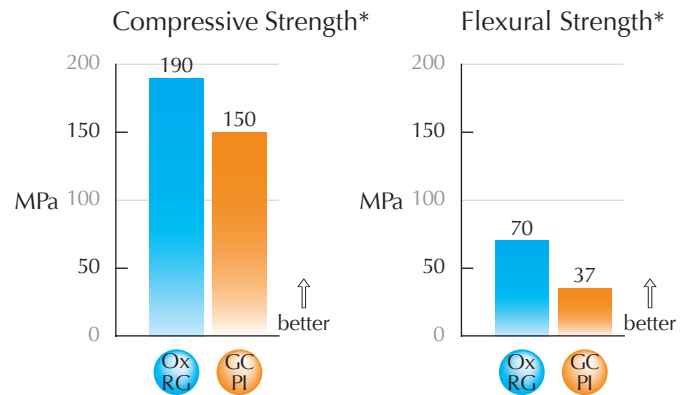
Oxford GI Resin CEM UF

Oxford GI Resin CEM UF : Thin Film Thickness, Better fit!

Thin Film Thickness!



Better Mechanical Properties!



*Data available upon request

It fits with:

Oxford GI Resin PRIME VLC



Best results in adhesion can be achieved by application of Oxford Resin PRIME VLC, a light cure primer for resin modified glass ionomer cements.

Primer for Resin Modified Glass Ionomer Cement

Oxford GI Resin PRIME VLC is a simple to use primer for dentin and enamel to enhance the bond between light cure resin modified glassionomer cements (e.g. Oxford GI Resin CEM UF) and tooth structure.

Ordering Information

Oxford GI Resin CEM UF, Light Cure Ultra Fine Resin Modified Glass Ionomer Cement for Luting

Part Number	Article
51-010	15 g powder / 10 ml liquid Oxford GI Resin CEM UF Handmix I dosage spoon I mixing block
51-011	50 x Oxford GI Resin CEM UF Capsules e.a. 0,4 g
05-002	Oxford Capsule Applier

Oxford GI Resin PRIME VLC, Light Cure Primer for Resin Modified Glassionomer Cements

Part Number	Article
51-014	1 x 5 ml Oxford GI Resin PRIME VLC bottle